

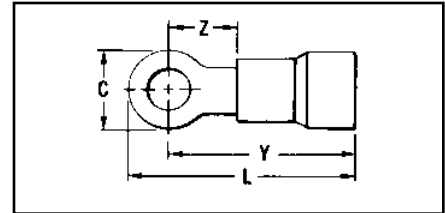
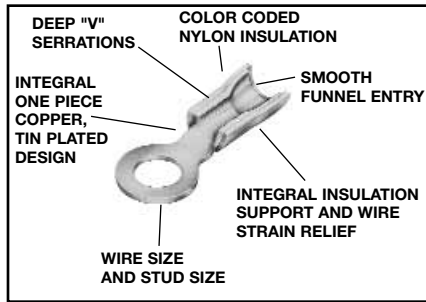
## TYPES TN AND YAES

### INSULUG™

Terminal – Nylon Insulated, Ring-Tongue

300 Volts Max., 105°C Max.

INSULUG™ type TN Nylon-insulated terminals are designed for heavy duty industrial, utility and military power and control-circuit applications for wire sizes 26 AWG through 10 AWG. They offer high dielectric strength and stability in oily conditions and meet military CLASS 1 and CLASS 2 requirements per SAE-AS25036 and the requirements of military specifications SAE-AS7928.



### Features and Benefits

- An integral one-piece copper barrel /insulation grip and wire strain relief design.
  - ◇ Provides improved physical strength characteristics over a multi-piece design.
- Manufactured of pure electrolytic copper.
  - ◇ Provides maximum conductivity, low resistance and ductility for excellent crimp forming properties.
- Brazed seam.
  - ◇ Provides a stronger barrel design to minimize any possible splitting and eliminates folding.
- Deep inner barrel serrations.
  - ◇ Provides excellent electrical conductivity and pullout strength values.
- Smooth funnel entry.
  - ◇ Easy wire insertion.
- The insulation is locked in place.
  - ◇ Will not twist off, thereby maintains proper dielectric values.
- Electro-tin plated.
  - ◇ Provides durable long-lasting resistance to corrosion.
- Color-coded and clearly marked.
  - ◇ Provides quick, easy wire size identification.
- Ring Tongue.
  - ◇ Provides a secure termination under the screw head that can not be removed without complete removal of the screw.
- Two or more terminals may be stacked on a common stud easily.
  - ◇ Provides flexibility and versatility.

Catalog Number	Wire Range	Stud Size	SAE-25036	Dimensions				Bulk ▲ Catalog Number	Installation Tooling	Wire Strip Length
				C	L Max.	Y Max.	Z Max.			
<b>TN18-4</b>	22-18 Max. Insul. Dia. Accom.: .120 Color Code: Red	3-4	-148	.23	.76	.64	.20	<b>YAES18N48</b>	Non-Ratchet: Y10D, Y1022  Ratchet: MR8-83	7/32"
<b>TN18-6</b>		4-6	-101	.25	.76	.64	.20	<b>YAES18N1</b>		
<b>TN186G1</b>		4-6	-102	.25	.87	.74	.49	<b>YAES18N2</b>		
<b>TN18-8</b>		6-8	-149	.31	.91	.76	.29	<b>YAES18N49</b>		
<b>TN18-10</b>		8-10	-103	.31	.91	.76	.29	<b>YAES18N3</b>		
<b>TN18-14</b>		12, 1/4	-150	.46	1.09	.87	.41	<b>YAES18N50</b>		
<b>TN18-516</b>		5/16	-104	.46	1.09	.87	.41	<b>YAES18N4</b>		
<b>TN18-38</b>		3/8	-105	.53	1.17	.91	.45	<b>YAES18N5</b>		
<b>TN14-4</b>	16-14 Max. Insul. Dia. Accom.: .153 Color Code: Blue	3-4	-152	.25	.79	.67	.24	<b>YAES14N52</b>		7/32"
<b>TN14-6</b>		4-6	-106	.25	.79	.67	.24	<b>YAES14N6</b>		
<b>TN146G1</b>		4-6	-107	.30	.91	.76	.51	<b>YAES14N7</b>		
<b>TN14-8</b>		6-8	-153	.31	.89	.74	.31	<b>YAES14N53</b>		
<b>TN14-10</b>		8-10	-108	.31	.89	.74	.31	<b>YAES14N8</b>		
<b>TN14-14</b>		12, 1/4	-154	.45	1.08	.86	.43	<b>YAES14N54</b>		
<b>TN1412G1</b>		1/2	-155	.71	1.32	.97	.72	<b>YAES14N55</b>		
<b>TN14-516</b>		5/16	-109	.45	1.08	.86	.43	<b>YAES14N9</b>		
<b>TN14-38</b>	3/8	-110	.53	1.16	.90	.47	<b>YAES14N10</b>			
<b>TN10-6</b>	12-10 Max. Insul. Dia. Accom.: .210 Color Code: Yellow	4-6	-111	.37	1.12	.94	.26	<b>YAES10N11</b>	11/32"	
<b>TN10-8</b>		6-8	-156	.37	1.12	.94	.26	<b>YAES10N56</b>		
<b>TN10-10</b>		8-10	-112	.37	1.12	.94	.26	<b>YAES10N12</b>		
<b>TN10-14</b>		12, 1/4	-157	.53	1.32	1.06	.37	<b>YAES10N57</b>		
<b>TN10-516</b>		5/16	-113	.53	1.32	1.06	.37	<b>YAES10N13</b>		
<b>TN10-38</b>		3/8	-114	.58	1.34	1.05	.40	<b>YAES10N14</b>		

▲ Class 1 and class 2. Meets the requirement of aerospace specification SAE-AS7928.

Blue highlighted items are industry standard and most frequently ordered.